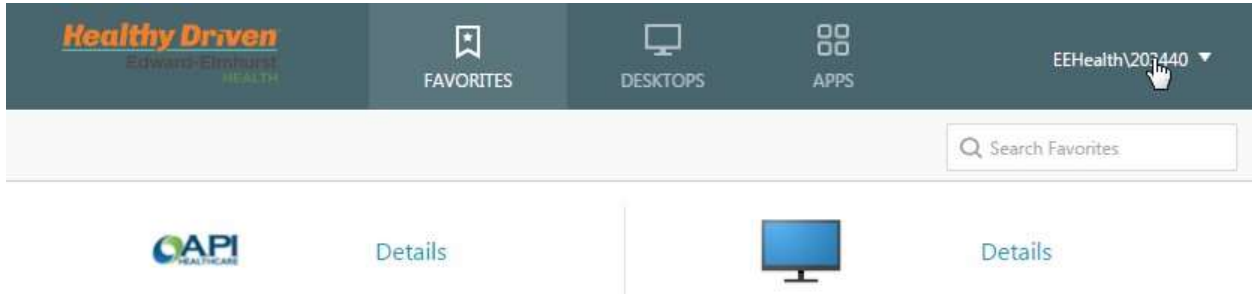
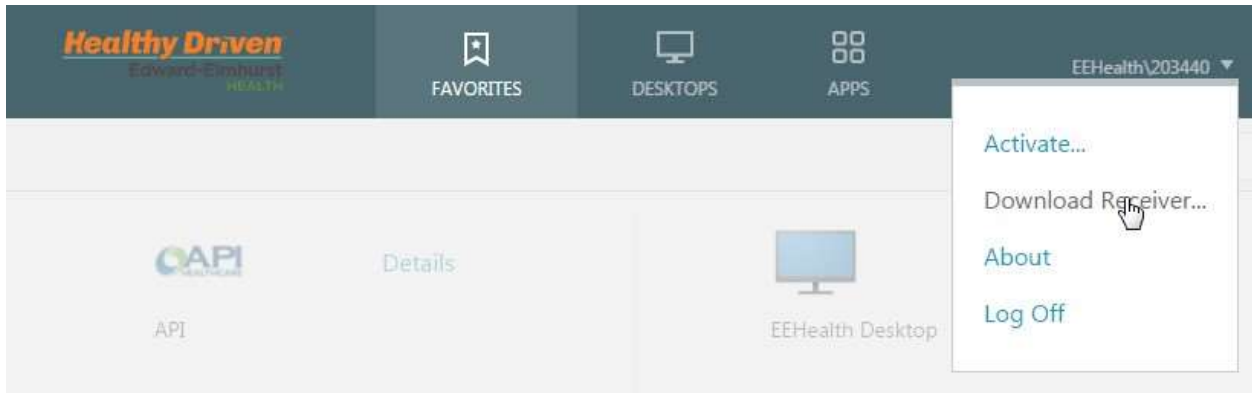


Installing Citrix receiver from SecureAccess or AllAccess

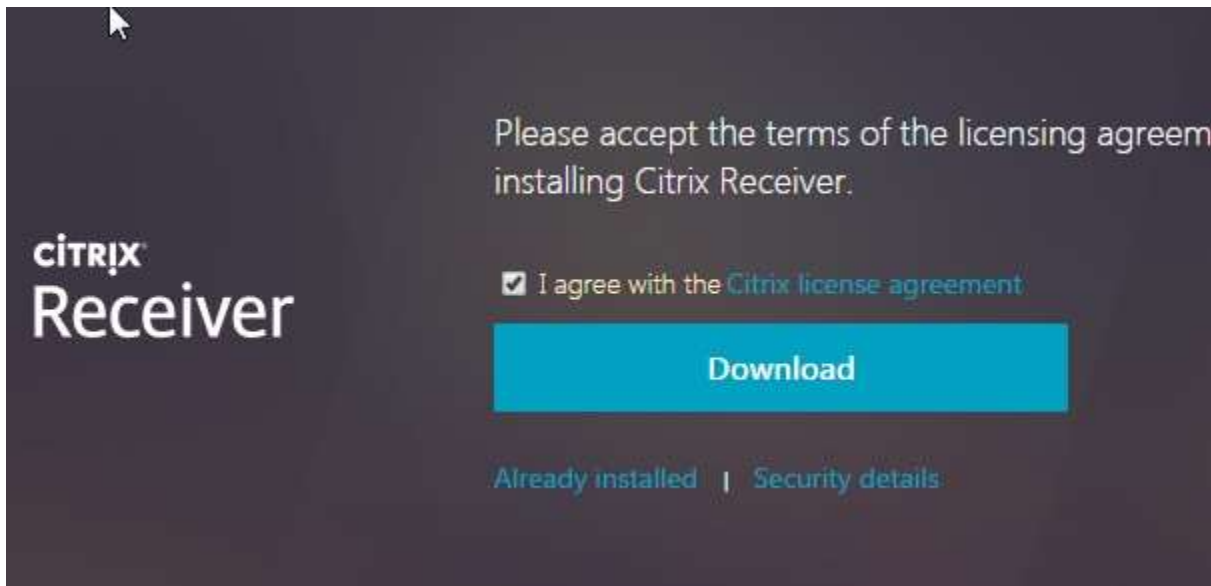
After you log in to <https://secureaccess.eehealth.org> or <https://allaccess.eehealth.org> with your Employee ID and password you will see your login ID in the upper right corner. Click on your ID



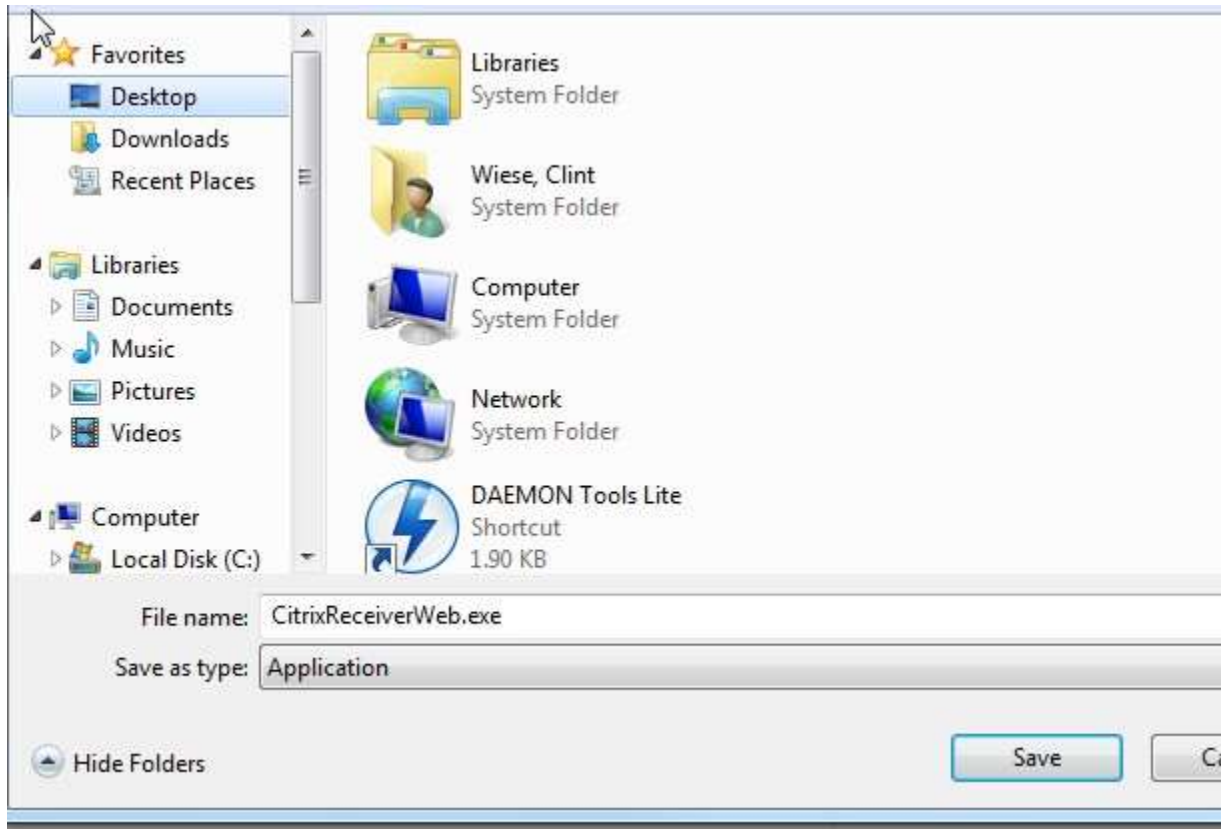
You will see a few options appear, choose Download Receiver



On this screen you will have to check the box that says "I agree with the Citrix license agreement", and then click the Blue Download button.



Depending on your browser, this screen may appear asking you to save the file. If so, pick a location you can easily find, desktop or downloads are good choices.

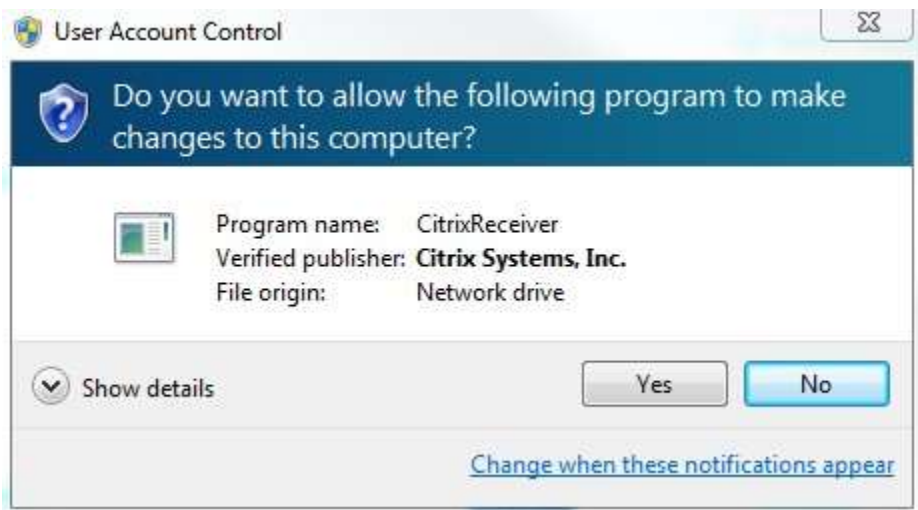


It may take a few minutes for the file download to complete. When it is completed you will see the file in the bottom bar of your browser window, click on that file.

If it does not show up like this (in some browsers it appears differently), go to your desktop or downloads folder and you will see it there, open the CitrixReceiverWeb.exe file.



If you receive this warning message, click yes to accept changes.



The install may take a few minutes to start, but this screen should finally appear. Click Start on this screen



Check the box to accept the license agreement and click Next.



Leave the "Enable single sign-on" box unchecked and click Install.



The install will take a few minutes to complete, when it is done you can click finish.

After it is complete, close out your Chrome or IE browser and reopen it and go back to <https://secureaccess.eehealth.org> or <https://allaccess.eehealth.org>

Log back in and now applications should open. If you are using Chrome it will still force you to download a file when you click the application, but it should open with Receiver now when you open the ICA file.